

An aerial photograph of a serene landscape. In the foreground, a small wooden cabin with a black roof and a chimney sits on a grassy patch. The cabin has a small deck with a white cushioned bench where two people are sitting. The cabin is surrounded by lush green trees. In the middle ground, a large, calm lake stretches across the frame, reflecting the sky. A small, tree-covered island is in the center of the lake. The background shows a flat landscape with more trees and a distant horizon under a cloudy sky.

ANNA

Cabin ANNA Catalogue



Contents

Foreword by Caspar Schols	3	3. ANNA	8	6. ANNA's Engineering	15	7. Other information	19
		Technical details	9	Technical details	16		
1. In mindful harmony with nature	4	4. ANNA Beetle	11	On & off-grid	17	8. Your ANNA	20
		Technical details	12	Interior	18		
2. 365 ANNAs	5	5. Options	14			9. Awards & media	21
Sustainable design	6						
Two types	7						

Mother Nature

It has been an incredible journey since I built the first cabin for my mother in her back yard in 2016. It took me 10 months to complete, nearly seven months longer than I anticipated. But I could never have imagined what happened after I finished. It marked the beginning of a new, incredible adventure. A video of the cabin received a staggering 10 million views, and the ANNA project was nominated for and won several awards. My mother and I were stunned, to say the least.

All the attention around ANNA resulted in a scholarship to the Architectural Association. I studied there for three years to turn myself from a theoretical physicist into an architect. Or rather, to become a strange mixture of the two! Another effect of the media interest was that I found people who believed in ANNA and were willing to invest in the idea. Now, the ANNA team has grown to 10 people, and sometimes I still have to pinch myself to realize this is real.

As a kid, my parents would rent a small house in the south of France every year. And every year, the whole family would spend one night sleeping outdoors in the fields on thin mattresses. I'd be squashed between my mother and father on one side and my three older brothers on the other. I vividly recall the excitement of sleeping under the stars, listening to the animals as they scurried past in the night, hearing and feeling the wind on my face while tucked up in my warm sleeping bag. But the most beautiful moment was waking up with the first rays of sun on my face. It's one of my strongest childhood memories.

The idea for ANNA came from my mother's desire to feel a deeper connection with nature. She raised me and my brothers to feel at home in nature. She taught us not to question the natural world and to accept that everything makes sense, despite there being no explanation.

ANNA's moving shells establish a dynamic connection to the environment. ANNA can change with the seasons and the weather conditions. This allows us to live, sleep or work temporarily or permanently close to nature. Shuffle or push layers away to open yourself up to the environment, day and night.

ANNA represents the feeling you get when you're in the middle of a wide desert, staring out at the ocean or on the top of a mountain. You're not just an observer, you're a participant. Fully immersed. It's about the stars at night, the sunrise in the morning, the animals all around, the unknown sounds, the smells, the striking light reflecting on nature's surfaces. An opportunity to sleep outdoors in a safe and comfortable environment. ANNA reflects the intense emotion you feel when everything comes together.

It is my dream to create a network of ANNAs reaching to the most beautiful and remote corners of the world. I want to let people experience nature like never before. To raise awareness for the incredible resource our ecosystems are for our wellbeing and for our existence on this planet. And to raise support and funds for nature around the world.

Thank you to everyone who has supported us to get where we are today. I'm looking forward to continuing our journey into nature together. ANNA stands for all of you who share the same dream: a wilder planet, where we feel at home in nature.

Caspar



In mindful harmony with nature

Cabin ANNA was born from a deeply personal need: to bring design closer to life and nature. It began as a one-off project for designer Caspar Schols' mother—a structure that could adapt to her changing needs and moods. What followed was the realization that many people long for the same thing: a living space that flexibly responds to weather, seasons, solitude, and company. ANNA exists to meet this need. It is both a home and a tool—an adaptable cabin that strips design to its essentials and reintroduces nature into daily life. With movable walls and layered construction, it allows users to modulate their environment and become more attuned to natural rhythms.

This is not just a cabin—it is a statement about how we want to live.



▶ [CLICK TO PLAY VIDEO ON YOUTUBE](#)

365 ANNAs

Each ANNA is responsive to its environment—whether nestled in alpine snow, coastal dunes, dense forest, or open prairie. Designed to adapt, ANNA thrives in a wide range of climates and geographies, inviting its users to live more closely with the natural world around them.

Our vision is to create 365 ANNA cabins around the globe—each one a local expression of a universal need: to reconnect with nature in meaningful, everyday ways.

Where do you imagine yours?



Sustainable design

Cabin ANNA is designed as a modular system with dry connections which results in a short construction time on site and minimal ecological disruption. ANNA is built to outlast generations, but if necessary, all elements can be taken apart and recycled, or rebuilt in a new location. To minimize transportation impact, 80% of parts will be able to be locally produced anywhere in the world using CNC machines. ANNA can be dismantled and moved in just a few days without leaving a trace in nature.

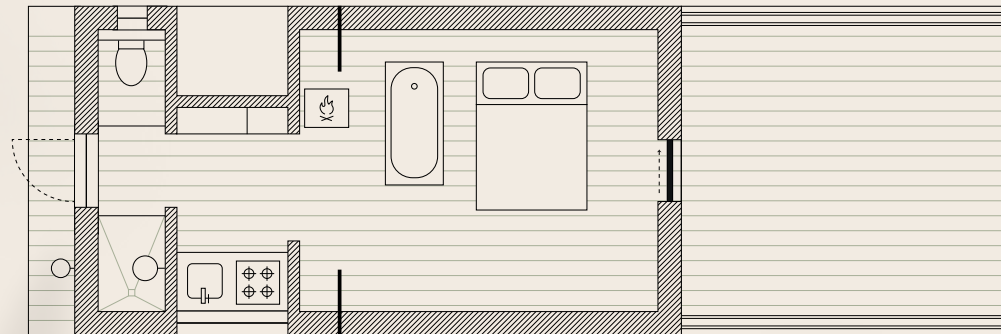


We have designed two types of ANNA cabins to meet a range of needs and sites.

ANNA

NFA: 30–52 sqm

Starting at € 412.000



Optional elements:

Kitchen

Indoor shower & toilet

Outdoor shower

Infloor bath + bed

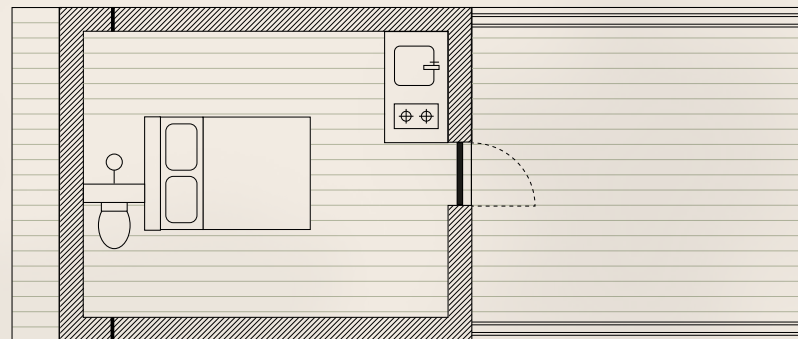
Sleeps four

More info & specs

ANNA Beetle

NFA: 15–28 sqm

Starting at € 249.000



Optional elements:

Kitchenette

Indoor shower & toilet

Outdoor shower

Murphy bed

Sleeps two

More info & specs



ANNA

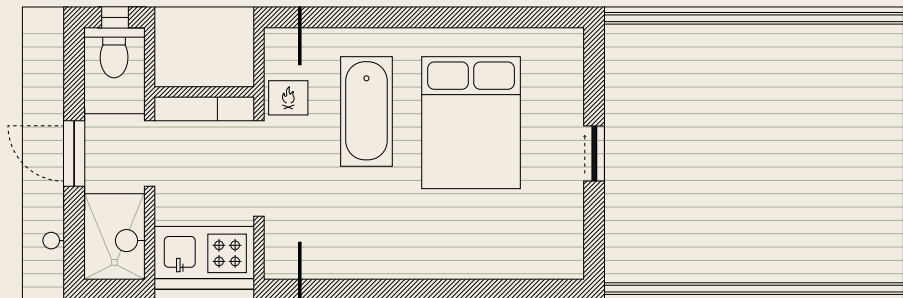
Options

- In-floor bath
- In-floor storable bed (queen)
- Mezzanine bedroom (queen)
- Fully equipped kitchen
- Luxury bathroom with indoor and outdoor shower
- High-end taps & switches
- Stained black or natural cladding

Further specifications

- High quality, sustainable wood & stainless steel
- Weathertight in all seasons
- Double-glazed safety glass
- Factory build & modular assembly on site (3-4 weeks)

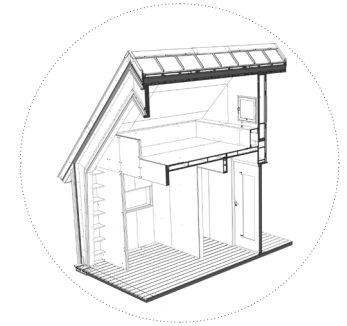
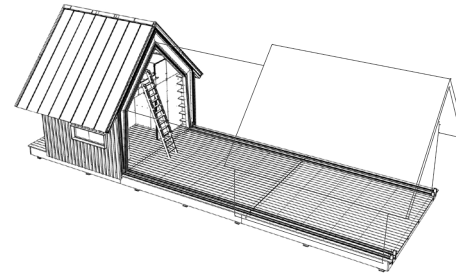
Starts at € 412.000





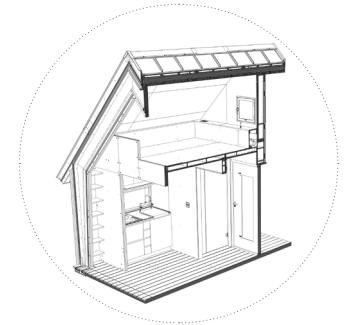
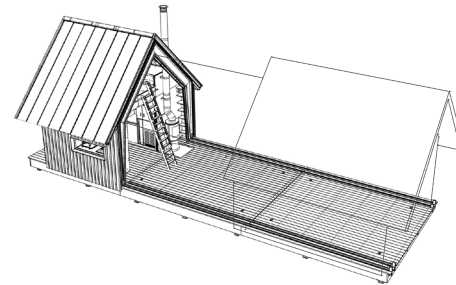
ANNA Body

Shell & core cabin



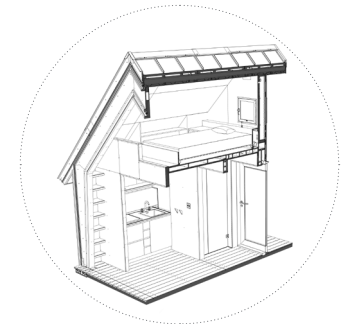
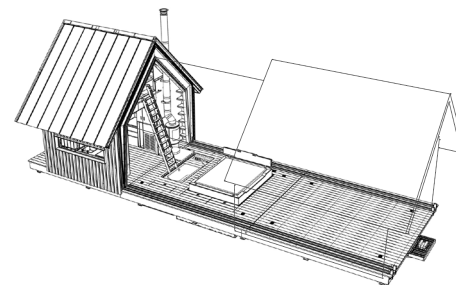
ANNA Elements

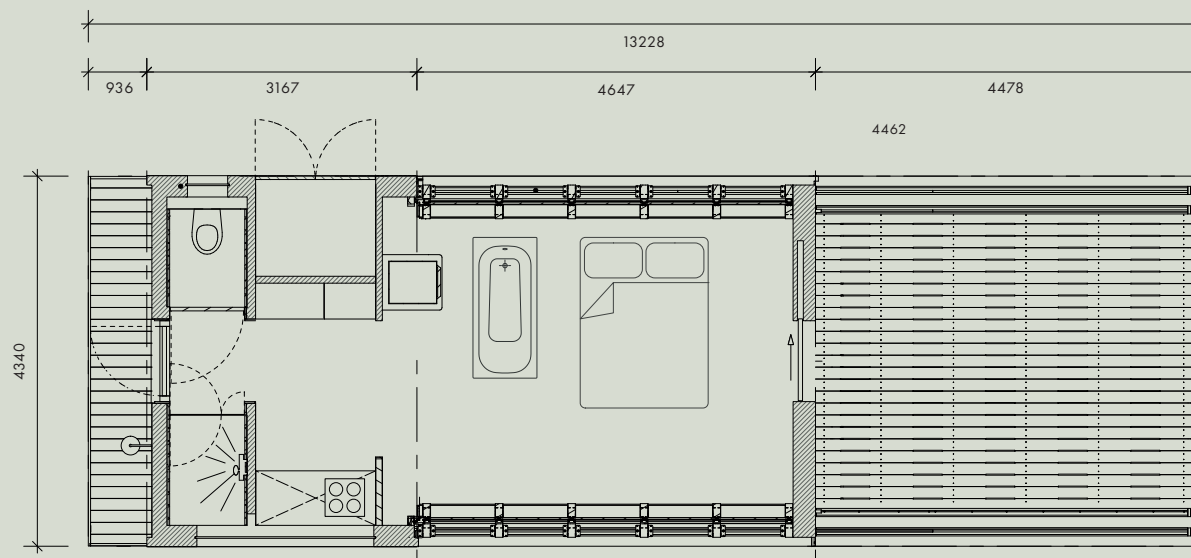
Fully installed MEP and select interior finishes



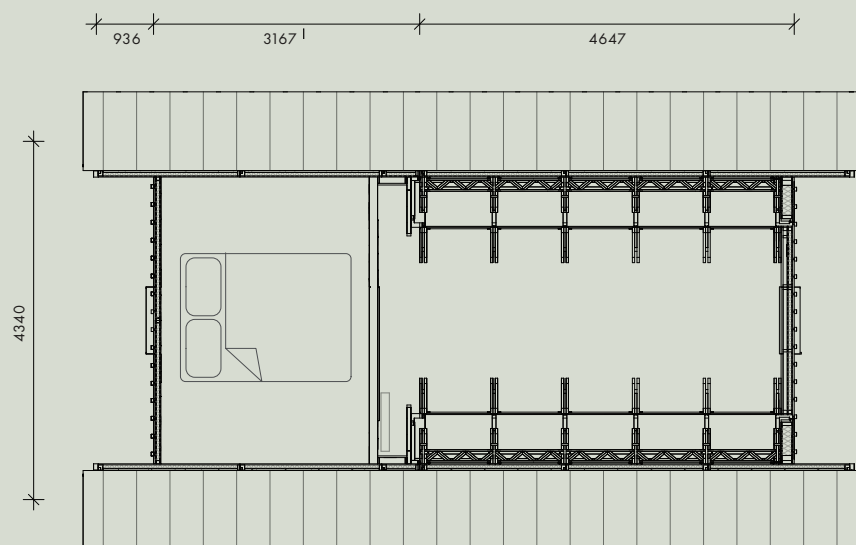
ANNA Collection

Fully equipped, including premium interior finishes





Floor plan – Ground floor



Floor plan – Mezzanine

Technical details ANNA

Floor area (Gross)

Approximately 34-57 m² or 365-613 ft²

Upper floor area (Net)

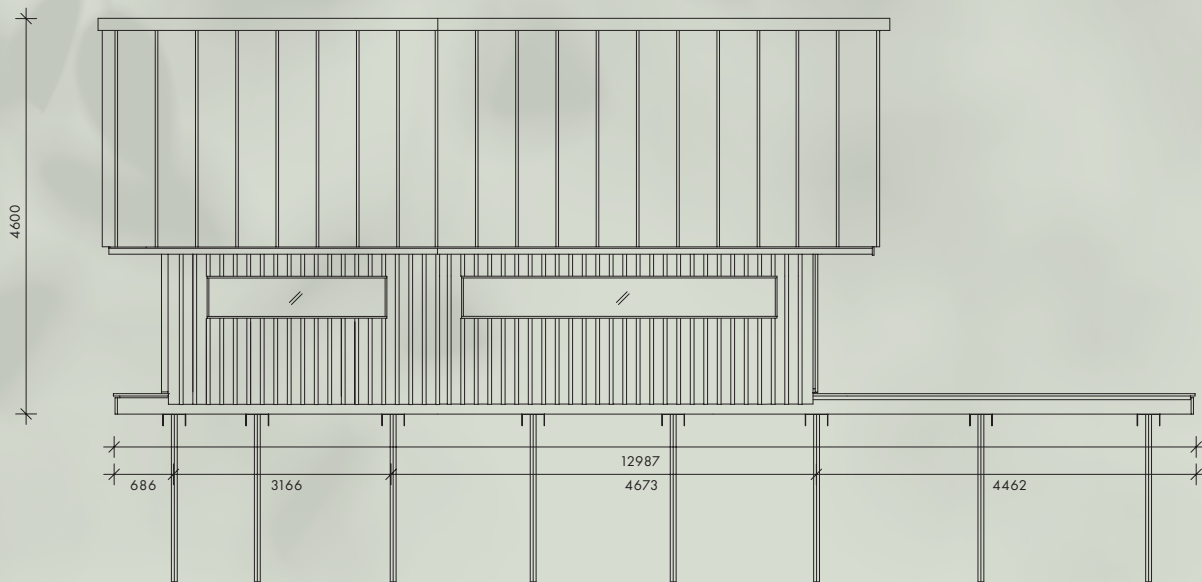
Approximately 8 m² or 86 ft²

Weight

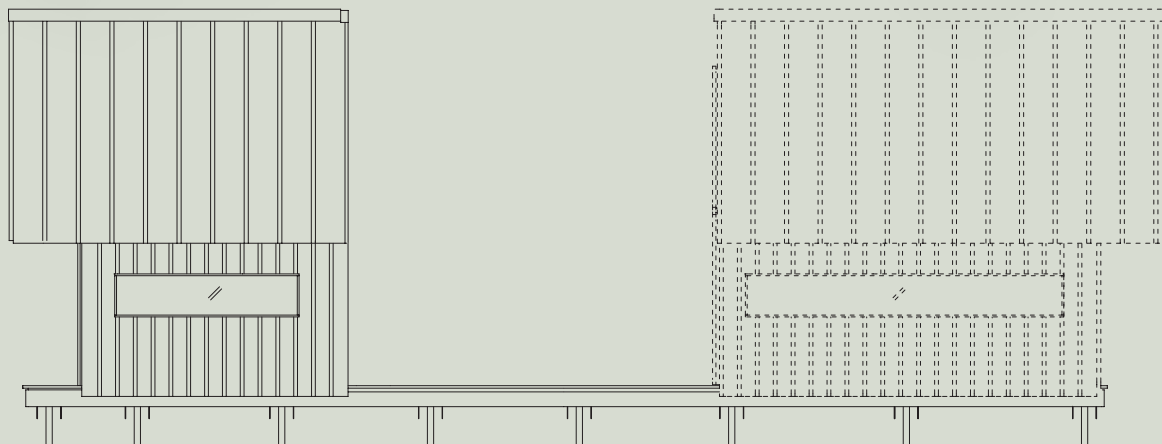
Approximately 22 tons

Height of the cabin

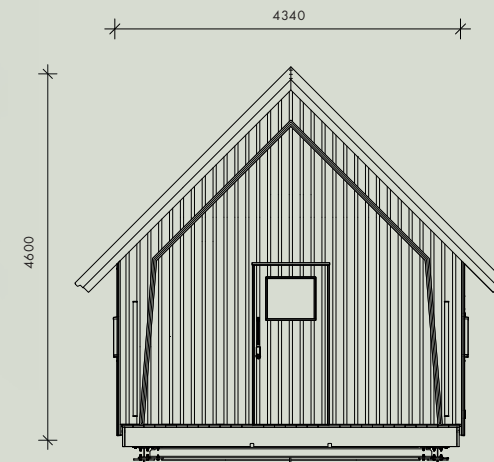
4.5 m or 14.7 ft



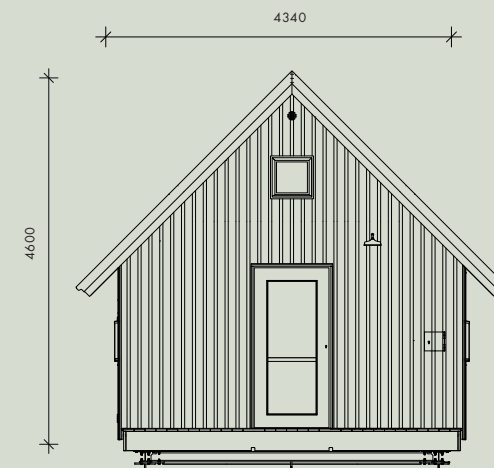
Side elevation (closed)



Side elevation (open)



Front elevation



Back elevation



ANNA Beetle

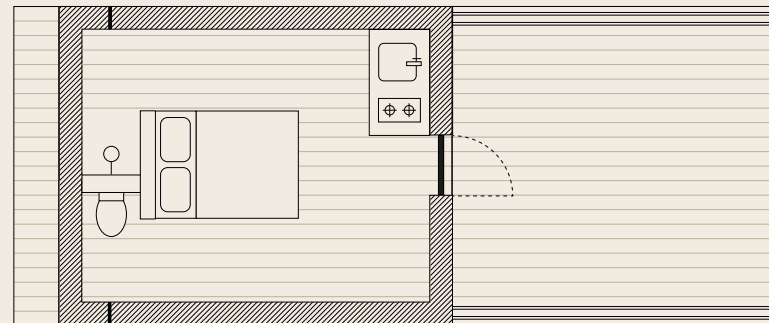
Options

- Kitchenette
- Indoor shower & toilet
- Outdoor shower
- Murphy bed

Further specifications

- High quality, sustainable wood & stainless steel
- Weathertight in all seasons
- Double-glazed safety glass
- Factory build & modular assembly on site (2-3 weeks)

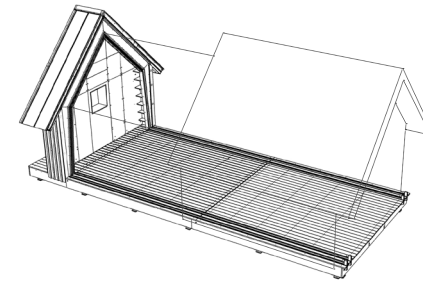
Starts at € 249.000





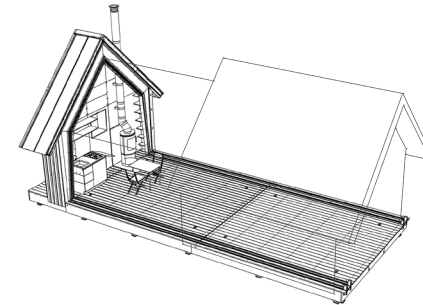
ANNA Beetle Body

Shell & core cabin



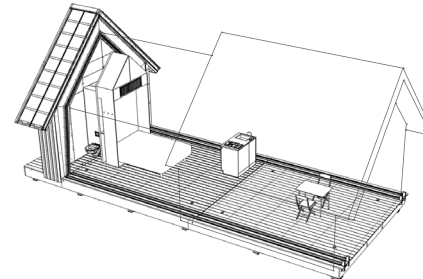
ANNA Beetle Outback

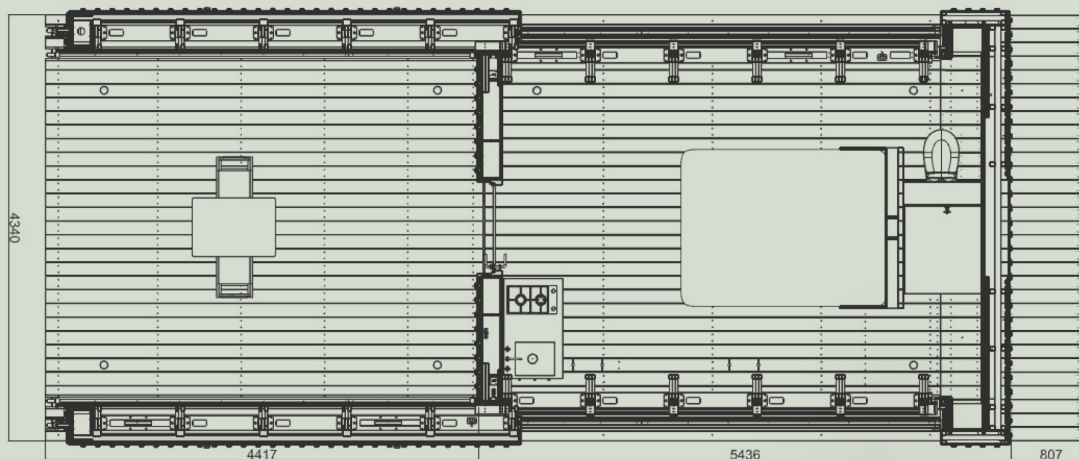
Kitchenette, outdoor shower, wood burning stove



ANNA Beetle Suite

Kitchenette, indoor bathroom & shower, murphy bed, electrical heating





Floor plan – Ground floor

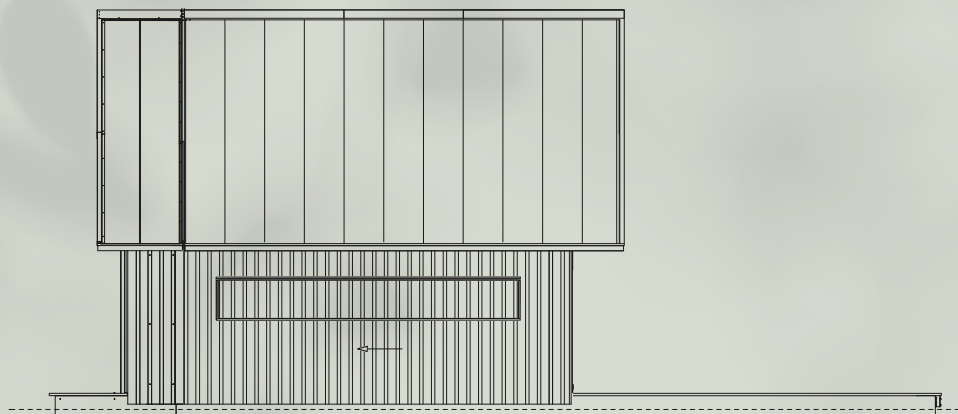
Technical details ANNA Beetle

Floor area (Gross)

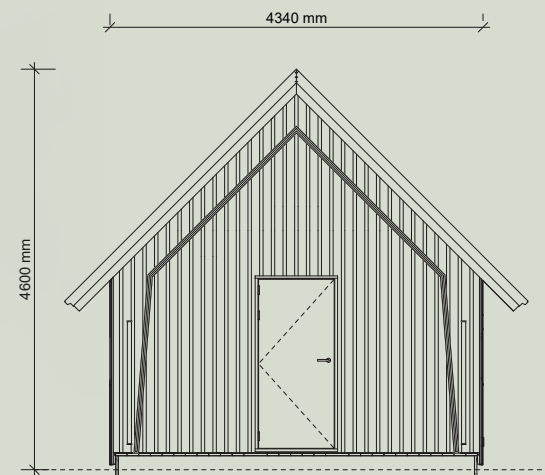
Approximately 23-46 m² or 247-495 ft²

Height of the cabin

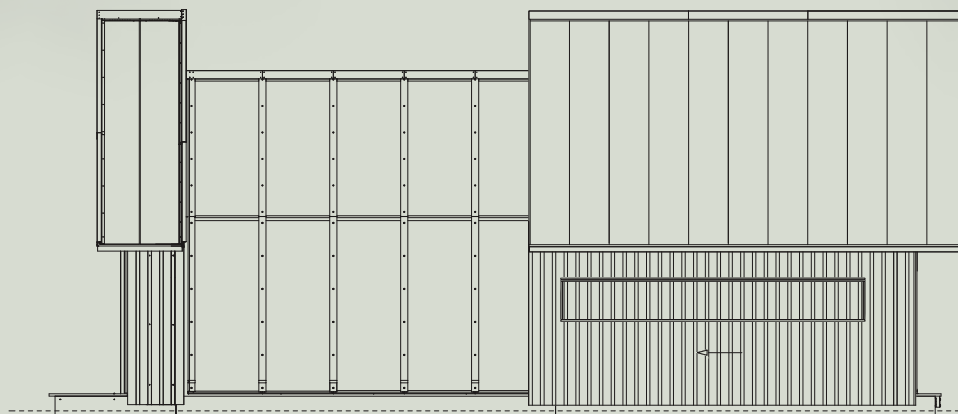
4.5 m or 14.7 ft



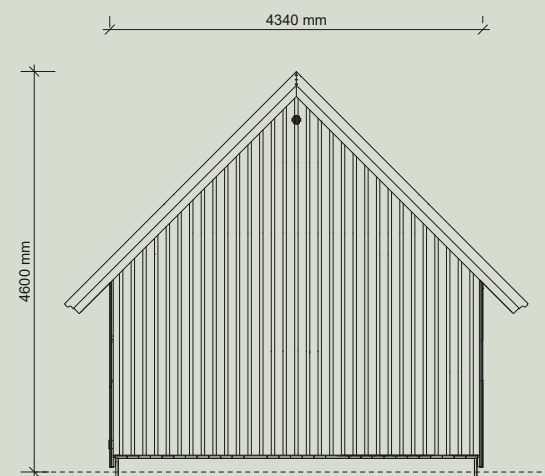
Side elevation (closed)



Front elevation



Side elevation (open)



Back elevation



Options

ANNA

Body: € 412.000

Shell & core cabin

Elements: € 472.000

Fully installed MEP and select interior finishes

Collection: € 547.000

Fully equipped, including premium interior finishes

ANNA Beetle

Body: € 249.000

Shell & core cabin

Outback: € 284.000

Kitchenette, outdoor shower, wood burning stove

Suite: € 297.000

Kitchenette, indoor bathroom & shower, murphy bed, electrical heating

ANNA's Details & Technical Information

From the very beginning, we knew that creating a structure this dynamic and close to nature demanded engineering at the highest level. Every detail—from the smooth glide of the sliding shells to the precision of the foundation—was carefully considered to ensure not just elegance, but endurance.

We partnered up with the best engineers, including those at ARUP, to rigorously model and optimize ANNA's structural performance, and performed Finite Element Method (FEM) analysis to ensure ANNA's resilience under various loads and forces, such as wind and snow.

Together, we've built a cabin that is as strong as it is graceful—ready to weather storms, adapt to climates, and be assembled with ease, anywhere in the world.



Technical details

Materials

The exterior of ANNA is made from high performance sustainable wood. The cabin is built with the best materials to ensure durability and strength:

- Plywood interior
- Steel roof
- HR+ double glazing
- Kitchen & shower made of stainless steel clad with solid wood panels

Insulation

ANNA is fully insulated and airtight to be comfortable at temperatures well below 0 °C. The cabin has insulated floors, airtight shells and double glazing.

Structural Engineering

At the heart of ANNA's design lies a patented rail system that ensures smooth movement while offering robust protection against the elements. A unique combination of a wind labyrinth, integrated brushes, and rubber seals forms a

weather-tight seal between the structure's moving layers, keeping nature at bay when needed, and inviting it in when desired.

ANNA is equipped with insulated double glazing and specially engineered trusses capable of withstanding wind speeds of up to 160 mph. The trusses are built from a core of 30mm A-quality plywood, reinforced with aluminum inserts, and finished in solid wood.

Beneath it all, the platform is reinforced with high-density cross beams, giving ANNA its remarkable stability in even the harshest conditions.

Move ANNA's Shells with Ease

Each of ANNA's shells weighs over 3,000 kilos, yet can be moved by hand as easily as rolling your carry-on bag when traveling. This surprising smoothness is made possible by a system of precisely balanced steel rails and the highest-quality, low-friction German bearings. There are no motors or electronics involved, just the efficiency of good design. It's a quiet, physical experience that connects you to the structure—and to the outdoors—every time you move it.

Brakes

ANNA is equipped with a brake system inspired by the simple efficiency of a bicycle hand brake. It allows users to effortlessly slow and gently stop

the movement of the heavy shells, ensuring ease and control. This elegant mechanism enhances both safety and the tactile experience of opening and closing ANNA.

The Platform

A perfectly level platform is essential for smooth sliding. Traditional foundation systems often have tolerances that are too imprecise for our needs. That's why we developed a custom frame that allows for micro-leveling and is compatible with various foundation types, including helical piles and concrete piers.

Onsite Assembly

ANNA is delivered in modular components and shipped directly to the site. Installation takes just 3–4 weeks and requires no specialized tools, making assembly straightforward, yet precise. Unlike many mobile structures, ANNA isn't limited by road transport dimensions. Freed from those constraints, its design remains spacious and intentional.

More information about ANNA's engineering can be [found here](#).



On & off-grid

ANNA can be installed on-grid and off-grid. The client is responsible for installing necessary facilities like water, electricity and a sewage system near the cabin. We will provide a template that can be used by your local expert.

Due to varying local regulations and local circumstances, the off-grid set up is best determined with a local expert. We can team up with them to share our knowledge and help you select the best off grid set up for your ANNA.

Water resources

Depending on your location, there are several options for obtaining water. For instance by drilling a well or collecting rainwater. As every location is unique, it is critical that you investigate what options

work best and resolve this with your local expert. Local drinking water regulations must also be considered.

Electricity resources

The cabin can be fitted with a solar system on the roof. Local regulations and circumstances might influence availability.

Wastewater

The off-grid system uses a septic tank located underground. If your project is located in the Netherlands, we can direct you to our local partner.

Other information

Intellectual property

Cabin ANNA is protected by copyright and is a patented product.

Certifications

ANNA fully complies with Dutch building regulations, and Cabin ANNA is designed with European and US building codes in mind. We have experience working with clients to confirm compliance with their specific local and / or state regulations and code requirements.

Manufacturing

Cabin ANNA is a Dutch company, and ANNA is manufactured in and shipped from The Netherlands.

Maintenance

ANNA is a well-engineered wooden structure. As with all natural products, it requires care and proper maintenance. ANNA is designed for easy maintenance, all crucial elements such as wheels can easily be replaced without taking the cabin apart. Some materials will oxidize and get more character over time.

Quality

When properly taken care of, ANNA will last for generations. All critical elements will be supplied with a warranty.

Your ANNA

Order process



The process of purchasing and installing your ANNA unfolds in clear, guided steps. We work closely with you and your contractor to prepare the site, coordinate logistics, and ensure a smooth installation.

Pre-order – Secure your ANNA with a €10,000 deposit. Receive a starter kit with drawings and site prep guidance.

Quote & Agreement – Finalize options and receive your quote. Sign the purchase agreement and pay 15% — this is when your cabin is officially reserved.

Site Prep & Production – Prepare the site and foundation. Pay 40% before production begins.

Shipping & Delivery – Pay 35% before shipping. We coordinate transport and customs.

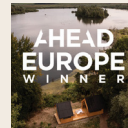
Installation – Our team supervises the process. Your contractor handles utility connections and finishing.

Handover & Aftercare – After walkthrough, pay the final 10%. We provide support with any punchlist items or warranty needs.





Awards & media



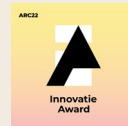
AHEAD Awards 2023 winner
"Lodges, Cabins and Tented Camps"



FRAME Awards best design first
winner of 2023



Winner World Hotel Building
of the Year 2022



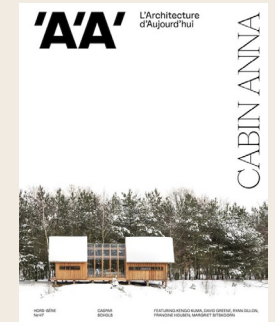
Top 3 most innovative architecture
projects of the Netherlands



A+ Awards Project of the Year 2021
(chosen from 5,000 projects worldwide)



Dezeen longlisted small building
of the year 2022



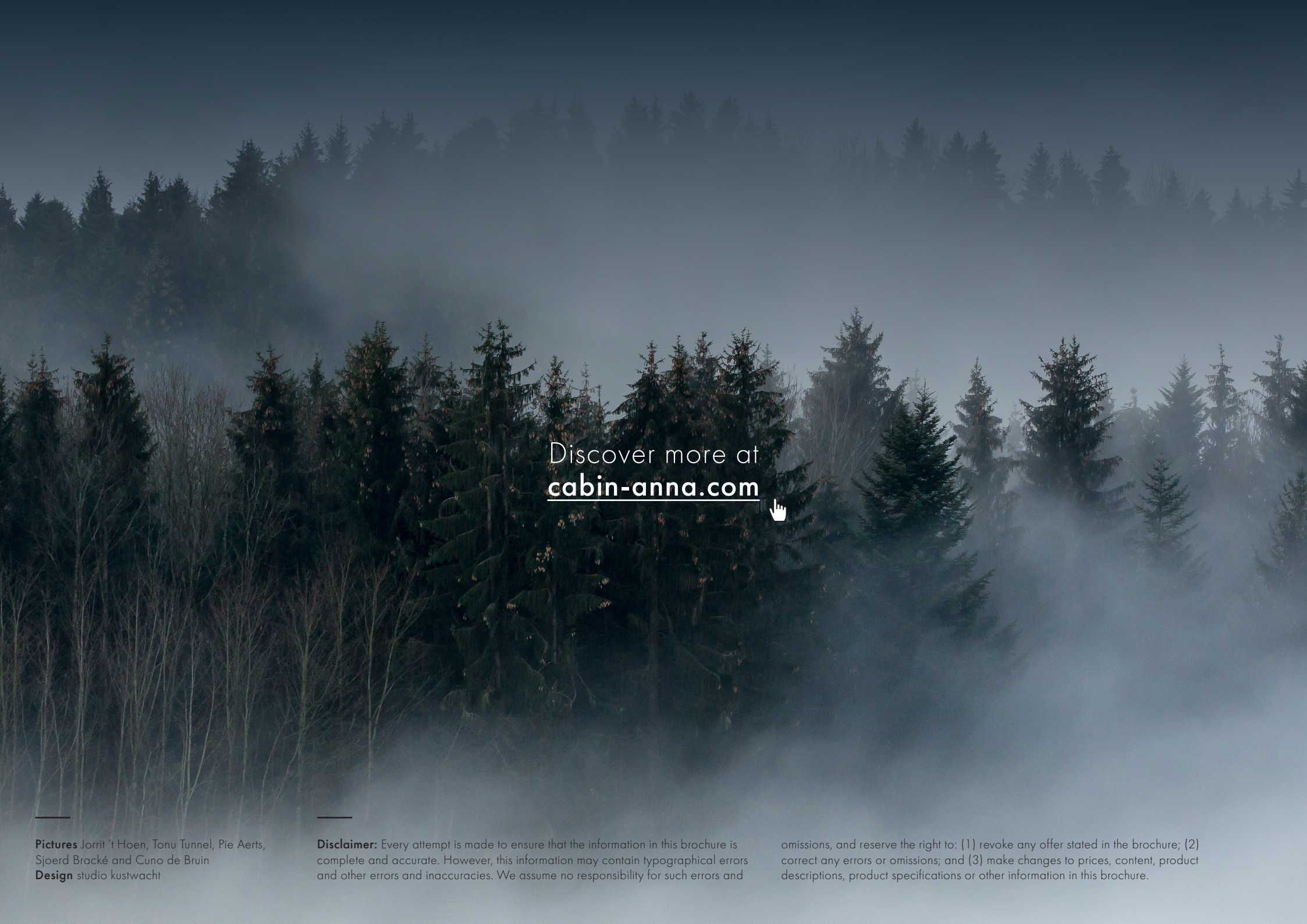
Featured in
A'A' Magazine



Featured in The New
York Times



Featured in Make
Yourself at Home
Discovery+



Discover more at
cabin-anna.com



Pictures Jorrit 't Hoen, Tonu Tunnel, Pie Aerts,
Sjoerd Bracké and Cuno de Bruin
Design studio kustwacht

Disclaimer: Every attempt is made to ensure that the information in this brochure is complete and accurate. However, this information may contain typographical errors and other errors and inaccuracies. We assume no responsibility for such errors and

omissions, and reserve the right to: (1) revoke any offer stated in the brochure; (2) correct any errors or omissions; and (3) make changes to prices, content, product descriptions, product specifications or other information in this brochure.