

An aerial photograph of a small, modern cabin nestled in a dense forest. The cabin has a dark, gabled roof and a large glass section on its side, revealing the interior. It is surrounded by tall trees with green and yellow foliage, suggesting an autumn setting. A dirt path leads to the cabin. The overall atmosphere is serene and natural.

ANNA

Cabin ANNA
catalogue



Contents

Foreword by Caspar Schols	3	3. ANNA Stay	9	5. Renting out ANNA	20	10. Maintenance	25
1. In mindful harmony with nature	4	Specifications	10	Collection	21	11. Quality	25
2. ANNA Models	6	Technical details	11	Resort	22	12. Apply to pre-order ANNA Stay	26
ANNA Stay	7	On-grid	14	Remote	23	13. Business Case - Resort	28
ANNA Meet	8	Off-grid	15	6. Permits and preparations	24	14. Our commitment to nature	29
		Interior	16	7. Intellectual property	25		
		Pricing	17	8. Certifications	25		
		Delivery	18	9. Manufacturing	25		
		4. ANNA's unique location in nature	19				

Mother Nature

It has been an incredible journey since I build the first cabin for my mother in her backyard five years ago. It took me 10 months, about 7 months longer than I had calculated. But I never imagined what happened after I finished. It marked the beginning of a new, incredible adventure. A video of the project received a staggering 10 million views and was nominated and awarded with several awards. My mother and I were stunned, to say the least.

All the attention around ANNA resulted into a scholarship at the Architectural Association, where I studied three years to turn myself from a theoretical physicist into an architect. Or rather, to become a strange mixture of the two. Another effect of the media was that I found people that believed in ANNA and were willing to invest in the idea. Now, five years later, the ANNA-team has grown to 10 people and sometimes I still have to pinch myself to realize this is real.

As a kid my parents would rent a small house in the South of France every year for a few weeks. And every year, we would always spend one night sleeping outdoors in the fields on thin mattresses with the whole family. Me in between my father and mother on the one side and my three older brothers on the other side. The excitement of sleeping under the stars, hearing the animals so nearby in the night, hearing and feeling the wind over your face buried while tucked away in my warm sleeping bag. But the most beautiful moment, waking up from the first sunrays in your face. It's one of the strongest memories I have of my youth.

The idea behind ANNA came from my mother's desire to feel a deep connection with nature. This is how she raised my brothers and myself. To make us realize that nature actually is our first home. She taught us that in

nature there are no questions, and everything makes sense, despite the fact that there are no explanations.

ANNA's moving shells establish a dynamic connection to the environment. She changes with the seasons and weather conditions. Which allows one to live, sleep or work temporarily or permanently close to nature. Shuffle or push layers away to open yourself up to the environment, day, and night.

ANNA represents the feeling you get when you're overlooking an open desert, the ocean, or mountains. Not just as an observer but as a participant. Fully immersed. It's about the stars at night, the sunrise in the morning, the animals nearby, the unknown sounds, the smells, the striking light reflecting on nature's surfaces. An opportunity to sleep outdoors in a safe and comfortable environment. ANNA reflects the intense emotion you feel when everything comes together, as nature is an endless resource which is only giving.

It is my dream to create a network of ANNA's reaching to the most beautiful and remote corners of the world, to make people experience nature like they have never before. To raise awareness for the incredible resource our ecosystems are for our wellbeing and for our existence on this planet. And to raise support and funds for nature around the world.

Thank you to everyone who supported us to get where we are today. I am looking forward to continuing the journey together with all of you who share the same dream. ANNA stands for all of you who share the same dream: A wilder planet, where we feel at home in nature.

Caspar



In mindful harmony with nature

Our greatest source of inspiration

Being in nature is not only enjoyable. It has a magical effect on how we live, think, act, and heal. Science teaches us that natural light, sounds, views and colours have a significant effect on our physical and mental health.

In an increasingly urban world, the challenge to allow nature into our daily lives is ever increasing. With the construction of buildings, we've created comfort and safety, but also a distance to our natural environment and well-being. Walls and ceilings created both inside and outside limitations.

With Cabin ANNA, inside becomes outside again. ANNA inspires you through nature. It's a magical feeling to wake up with the morning melodies of the birds next to you, to feel a breeze gusting through the dining area or even to sleep under the open sky.



Scan QR
to watch the video



In balance with nature once again

ANNA fuels our dream of a green world in which we live amidst nature. A dream to restore the wilder world we live in and to create a deeper connection to each other and to our surroundings on a daily basis. We believe the enhancement of this sensitivity towards nature will result into more love and care for our planet.

Nature has always been our primary home. We can restore the rich, biodiverse, and wonderful world we live in. A chance to become a species in balance with nature once again. Let nature be the fundamental element in our lives again. Just imagine that.





ANNA Models

ANNA provides the freedom to live, sleep and work in a natural environment. Cabin ANNA currently offers two different models, ANNA Stay, and ANNA Meet. We are working on unique models and concepts, to be launched in the future.



Architizer

A+AWARDS

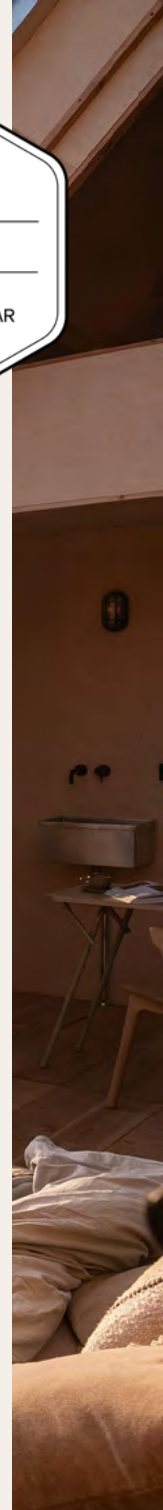
PROJECT OF THE YEAR
2021

ANNA Stay

ANNA Stay brings in a dynamic play between home, nature, and people. The cabin is a moving wooden structure where these three aspects merge. She is both a womb of comfort and simply a platform open to the elements.

- Designed for both short-term and long-term living;
- Suitable for 2 adults and 2 children, or 3 adults in total;
- Qualified for a wide range of climates and weather conditions;
- On-grid and off-grid with stylish amenities;
- Designed and built with a minimized impact on nature.

ANNA Stay won the internationally acclaimed 2021 Architizer A+Awards Project of the Year Award out of over 5000 entries from over 100 countries.





ANNA Meet

ANNA Meet is a creative open platform that connects people with nature. This cabin is especially developed to organise masterclasses, hold business sessions, submerge in yoga classes, or even to make ANNA Meet your office.

- Designed for creative sessions, yoga, meetings, and gatherings;
- Four different sliding shells to create various setups for different occasions;
- Qualified for a wide range of climates and weather conditions;
- On-grid and off-grid with stylish amenities;
- Designed and built with minimized impact on nature.

ANNA Meet is scheduled to go into production in 2023. [Click here](#) for more information on ANNA Meet.



ANNA Stay

Let nature be your home

Witness the most beautiful changes taking place outdoors. Wind down, fall asleep under a starry sky and wake up to the morning songs of birds. Notice how each season brings life with a different colour palette. Read, paint, and spend quality time with friends and family in your own natural environment. Connect with nature on a daily basis.

You can completely adjust ANNA Stay to the occasion, your mood, or the weather. Simply change its setup by playing with her 'shells'. ANNA Stay is especially designed for short-term or long-term living. It is equipped with all the amenities for a comfortable stay, whilst providing a true outdoor experience. With ANNA Stay, inside becomes outside again. A perfect home amidst nature.

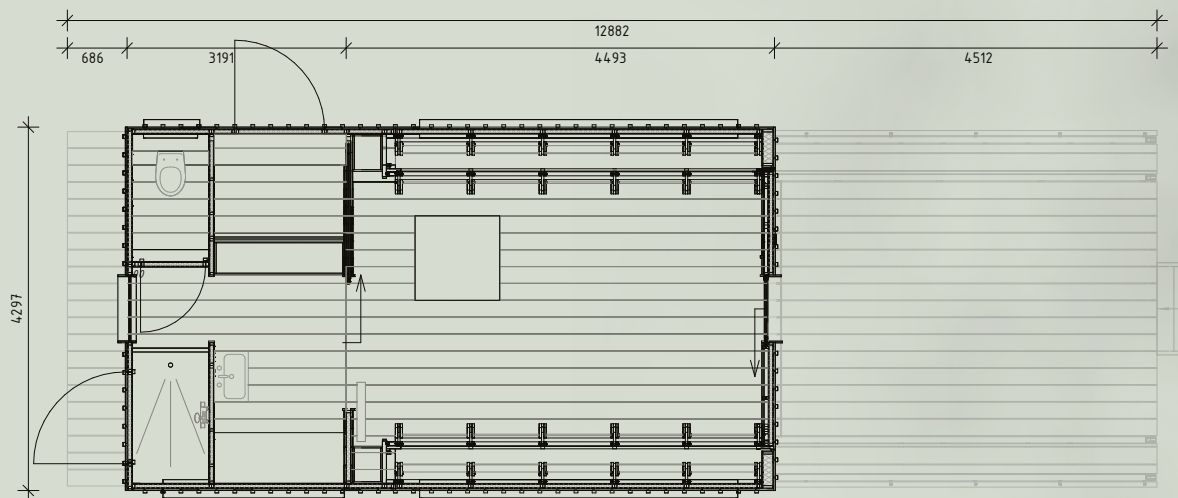




Specifications

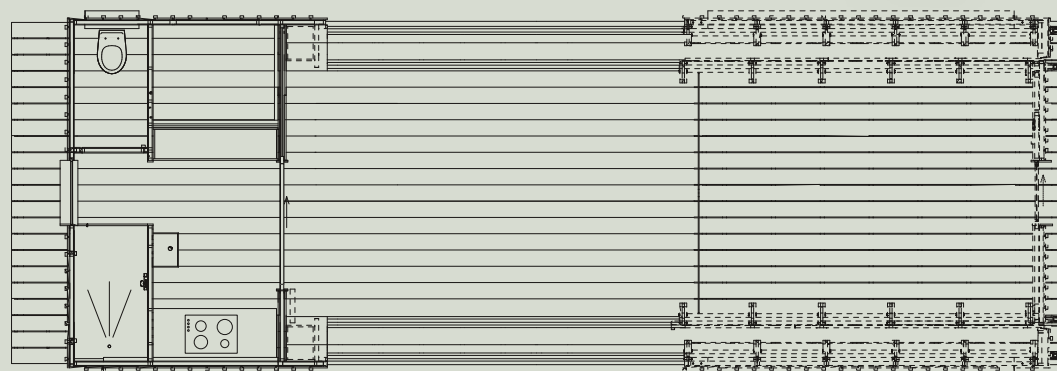
ANNA Stay comes turn-key. All things included:

- Fully moveable, lockable cabin
- Built-in bed frame with mattress or freestanding bed frame with mattress
- Built-in bath in the floor
- Mezzanine with double-sized bed
- Ladder to the mezzanine
- Wood stove with built-in oven
- Kitchenette with refrigerator, gas-hob, sink, lights, washbasin
- Built-in kitchen cabinets
- Foldable kitchen table with chairs
- Built-in clothes closet
- Hot and cold shower
- Flushable toilet
- Service room
- Electricity points
- Built-in lights
- Mosquito prevention doors



Floor plan – Ground floor (closed)

*The dimensions and layout of the new ANNA will differ on some points.
In general it comes down to the same thing.*



Floor plan – Ground floor (open)

Technical details

Upper floor area

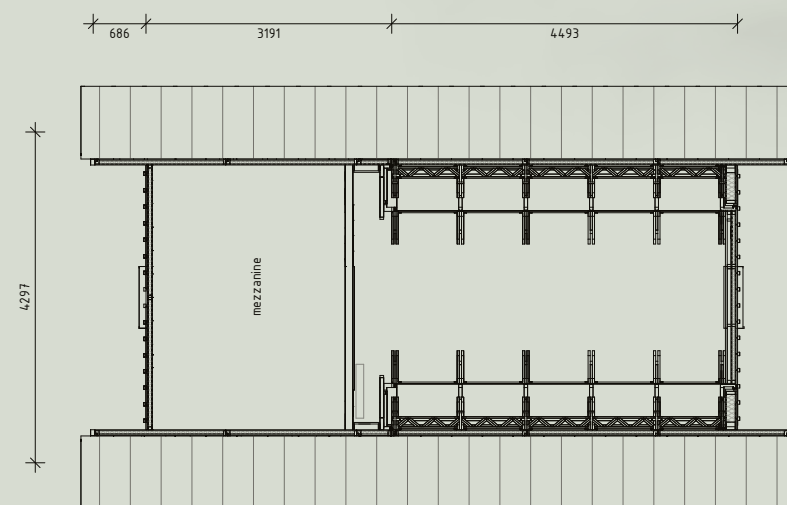
approximately 8 m² or 86.1 ft²

Weight

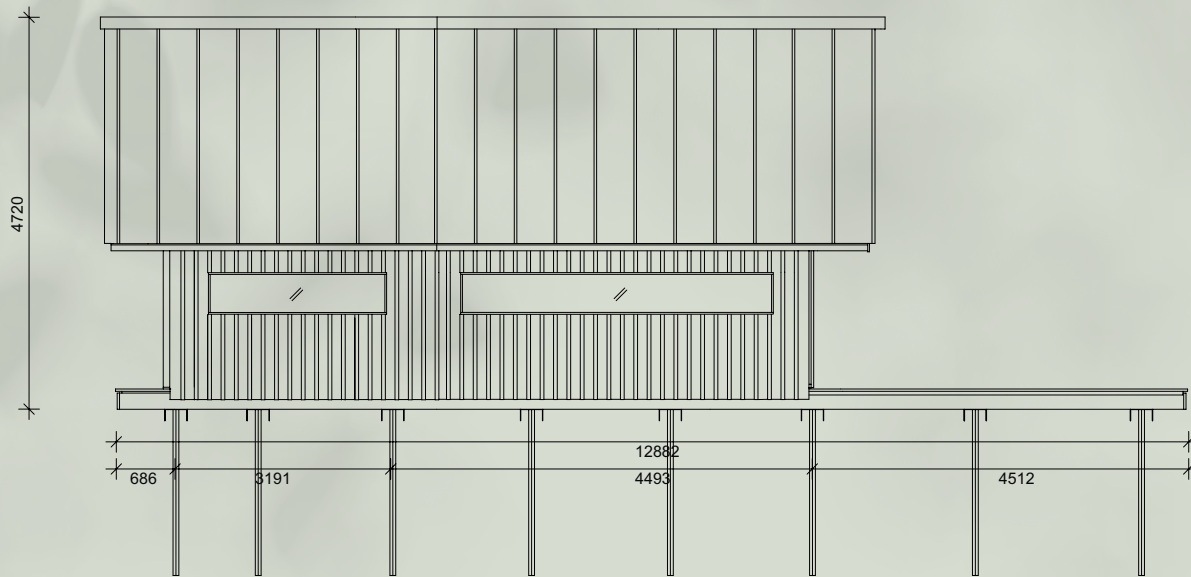
approximately 11 tons

Height of the cabin

4.5 m or 14.7 ft



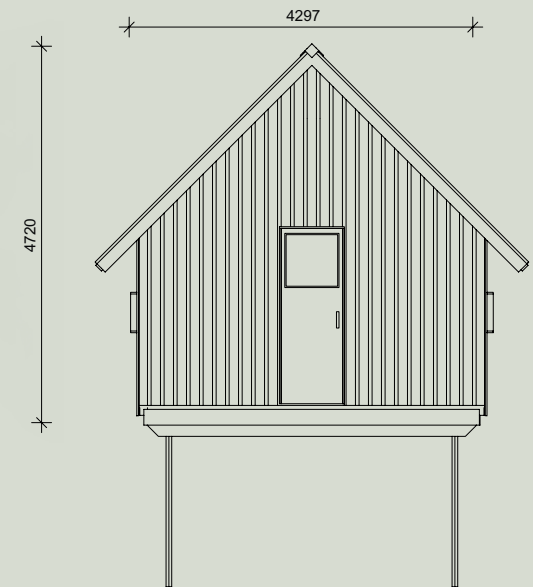
Floor plan – Mezzanine



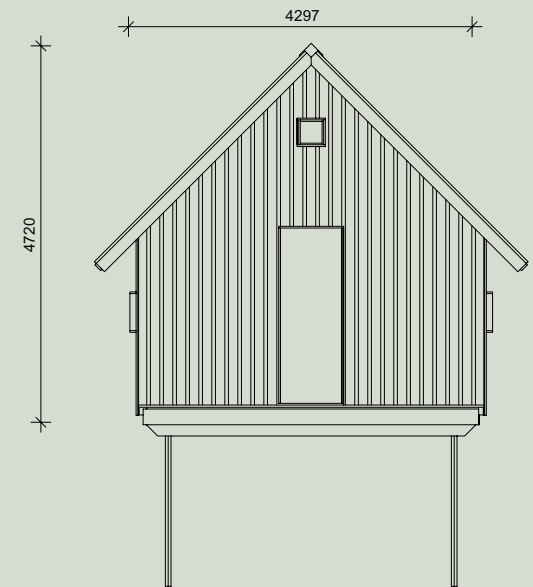
Side elevation (closed)



Side elevation (open)



Front elevation



Back elevation

Technical details

Foundation

ANNA Stay is designed to have a minimal impact on nature, and therefore does not require a conventional foundation. In most cases, a screw foundation with the self-levelling base is sufficient. However, local soil conditions need to be reviewed and local adjustments might be needed.

Materials

The exterior of ANNA Stay is made out of high-performing sustainable Accoya wood. The cabin is built up with different materials, to ensure the best durability and strength. Other main parts consist of;

- Birch plywood interior
- Steel roof
- HR+ double glazing
- Kitchen and shower made of wood and stainless steel

Colour

The exterior of ANNA Stay is made of Accoya wood. The colour of this wood is a natural, warm colour, which will intensify over the years. The wood is fire-treated and sealed, which enriches the longevity.

Climate

ANNA Stay is engineered to withstand heavy winds, rains, and snow loads, while double glazing and patented airtight seals will keep you even more comfortable in colder climates. As testing is still in process, specifications will be forwarded. When purchasing ANNA Stay, please provide us with your local requirements and regulations, so we can guide you accordingly.

Insulation

ANNA Stay is fully insulated and airtight to be comfortable at temperatures well below 0°C. The cabin provides insulated floors, airtight shells, and double glazing. Do remember that it remains a flexible wooden cabin, and not a conventional home.



On-grid

ANNA Stay is available in an on-grid and off-grid version. When choosing the on-grid version, the client is responsible for installing necessary facilities like water, electricity, and a sewage system near the cabin. We will provide a detailed template which can be used by your local expert.





Off-grid

We have developed a standard off-grid system that operates on solar panels, a wood stove, and biogas. Due to varying local regulations around the world, the option for a fully turn-key off-grid solution for ANNA Stay is only available in The Netherlands. To deliver off-grid cabins outside The Netherlands, the expertise of a local expert is needed. As we have a good understanding of off-grid systems, we would be happy to share our knowledge with you.

Water resources

There are several options subject to your location for the gathering of water. For instance by drilling a well or collecting rainwater. As every location is unique, it is critical that the client investigates what options work best and concludes this with their local expert. Drinking water

regulations for local consumption should be investigated before use.

Electricity recourses

The cabin is fitted with a solar system on the roof. Local regulations and circumstances might influence the availability. We would be happy to share our knowledge with you.

Wastewater

The off-grid system makes use of a septic tank that is located underground. If your project is located in The Netherlands, we could direct you to our local partner. For projects outside The Netherlands, we advise you to contact your local expert on septic tanks and wastewater facilities.

Interior

A lot of care and attention to detail has been taken to design the cabin. It is our vision to ensure a seamless experience between exterior and interior design. Therefore we've created an interior look that has all necessary items and that complements the overall experience. For the Dutch market we have created a list of premium suppliers that will help the client with supplying everything needed for the interior. You will be able to order from these suppliers directly, subject to local availability.

Clients outside The Netherlands will be provided with a mood board that gives a clear direction for materials, colours and fabrics that can be used in your decision-making process with local suppliers.





Pricing

We are in the final stages of development and prices of the New ANNA Stay Model. Currently, ANNA Stay is manufactured in the Netherlands and orders will be shipped from The Netherlands globally in 2022. Please bear in mind that local taxes and import duties might apply when importing.

The price of ANNA Stay is estimated from €169.000*, subject to your personal selection of option. When making an order for ANNA Stay, you can choose between the following options:

- Off-grid system
- Built-in bed frame with mattress or freestanding bed frame with mattress
- Fully integrated bath

Please be aware that these prices do not include:

- Shipment
- Installation
- Local import taxes
- VAT
- Local certification
- Permit processing

* The price is a target price and depends on the options you choose and may fluctuate due to the cost of raw materials. We will confirm the final prices with you before making your final order.



Delivery

Region	Earliest delivery
The Netherlands*	Q3 2022
Europe*	Q4 2022
USA & Canada*	Q4 2022
Globally	Subject to demand

*Delivery times are subject to availability, demand, and transportation.

ANNA's unique location in nature

As Cabin ANNA blends in perfectly with her environment, we see the natural environment and ANNA as one. When selecting the right location in nature for Cabin ANNA, different experience guidelines apply:

- Each cabin is surrounded by an abundance of nature;
- The nights are silent and pitch-dark;
- Absence of any construction or roads, within a radius of at least 100 meters (300 feet);
- Sufficient privacy and peace and quiet are key elements to the experience;

We would be delighted to hear if you share the same passion for Cabin ANNA. If our dreams match, we would be more than happy to partner with you and create a Cabin ANNA in nature together.



Renting out ANNA

Introduction of three different product experiences

Cabin ANNA can be acquired for private use or business purposes and is available in on-grid and off-grid versions, depending on your location. As a buyer you have the possibility to rent out cabin ANNA and provide your guests with a unique experience. If you choose to rent out your Cabin ANNA, the cabin will be promoted through our distribution channels as part of a concept, based on the type of location and the available facilities. There are three different concepts, and each concept has a unique product experience; [Collection](#), [Resort](#) and [Remote](#).



Collection

Collection offers an extraordinary network of privately managed nature locations. Think of secluded locations in privately owned reserves or estates. Situated in rolling hills, high up in the mountains or in dense forests, each Collection experience comes with a very personal touch by its host. With Collection, guests choose a distinctive and characterful stay in unusual locations amidst nature.

- Privately managed
- Individually located cabin
- On-grid and off-grid
- Handpicked locations
- Each with a unique personal touch



Resort

For guests who want to experience nature closer to home, Resort offers a perfect experience. Within the concept there are complete on-grid and off-grid ANNAs at locations amidst nature, with the services and hospitality of a nature resort. For Resort too, nature is leading, so guests will experience plenty of privacy and peace. During the stay, there are several possibilities to undertake activities in the surrounding nature, and restaurants are within walking distance.

- Unique lodging experience
- Located in nature resorts
- On-grid and off-grid
- Catered cabins
- Activities in nearby nature



Remote

Guests can surrender completely to nature and reside far away from civilization for a while. Here, everything falls into place, while immersing completely in nature. With Remote, guests choose a remote and self-sufficient stay. Remote cabins are individually located in protected nature reserves only.

- Off the beaten track
- Located in nature reserves
- Completely off-grid
- Self-sufficient
- Individually located cabin





Permits and preparations

Permits

All local permits, including the costs, are the responsibility of the client. For a permit in The Netherlands, we will be able to support you in the process. Please be advised that regulations differ from country to country. We advise you to contact local experts to support you in the permitting process. Please be aware that permit confirmation is critical to the delivery date.

Preparation

The preferred location for cabin ANNA needs to be reviewed to ensure accessibility. For delivery and installing, a local expert will

be needed to inspect the location and soil condition, based on the given specifications. To support your conditions, we will provide templates to ensure the foundation can be installed. In most cases, a simple screw foundation will be sufficient.

To sum up, the following preparations need to be concluded:

- Necessary permits are in place;
- The foundation needs to be ready upon our specifications;
- Make sure your grid connection, power drainage, and water are supplied to the location;
- For an off-grid cabin, a septic tank based upon our specifications is installed together with your preferred water supply.

Intellectual property

Cabin ANNA is protected by copyright and is a patented product.

Certifications

Cabin ANNA fully complies with all Dutch regulations. Cabin ANNA is designed with European and US certifications in mind. Local regulations should be reviewed and confirmed by the client, this is subject to order confirmation.

Manufacturing

Cabin ANNA is a Dutch company. The cabins are currently manufactured in The Netherlands. For now, orders will be able to be shipped from The Netherlands globally in 2022. To guarantee a high-end product, the fundamental elements of each cabin will remain to be manufactured in The Netherlands. Our vision is to partially start local manufacturing in the near future.

Maintenance

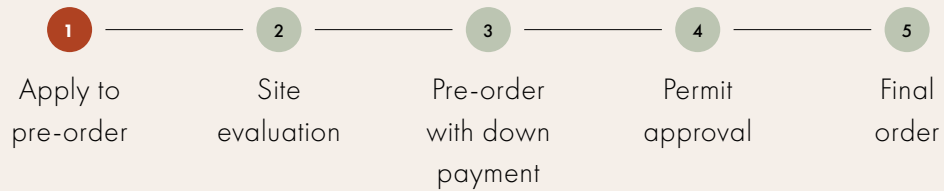
Cabin ANNA is a well-engineered wooden structure. As with each natural product, it requires care and proper maintenance. Cabin ANNA is designed with low maintenance in mind and is built with beautiful natural and sustainable materials. Some materials will oxidize and will get more characterful over time.

Quality

When properly taken care of, Cabin ANNA will last for generations. All critical elements will be supplied with a warranty.

Apply to pre-order ANNA Stay

Order process

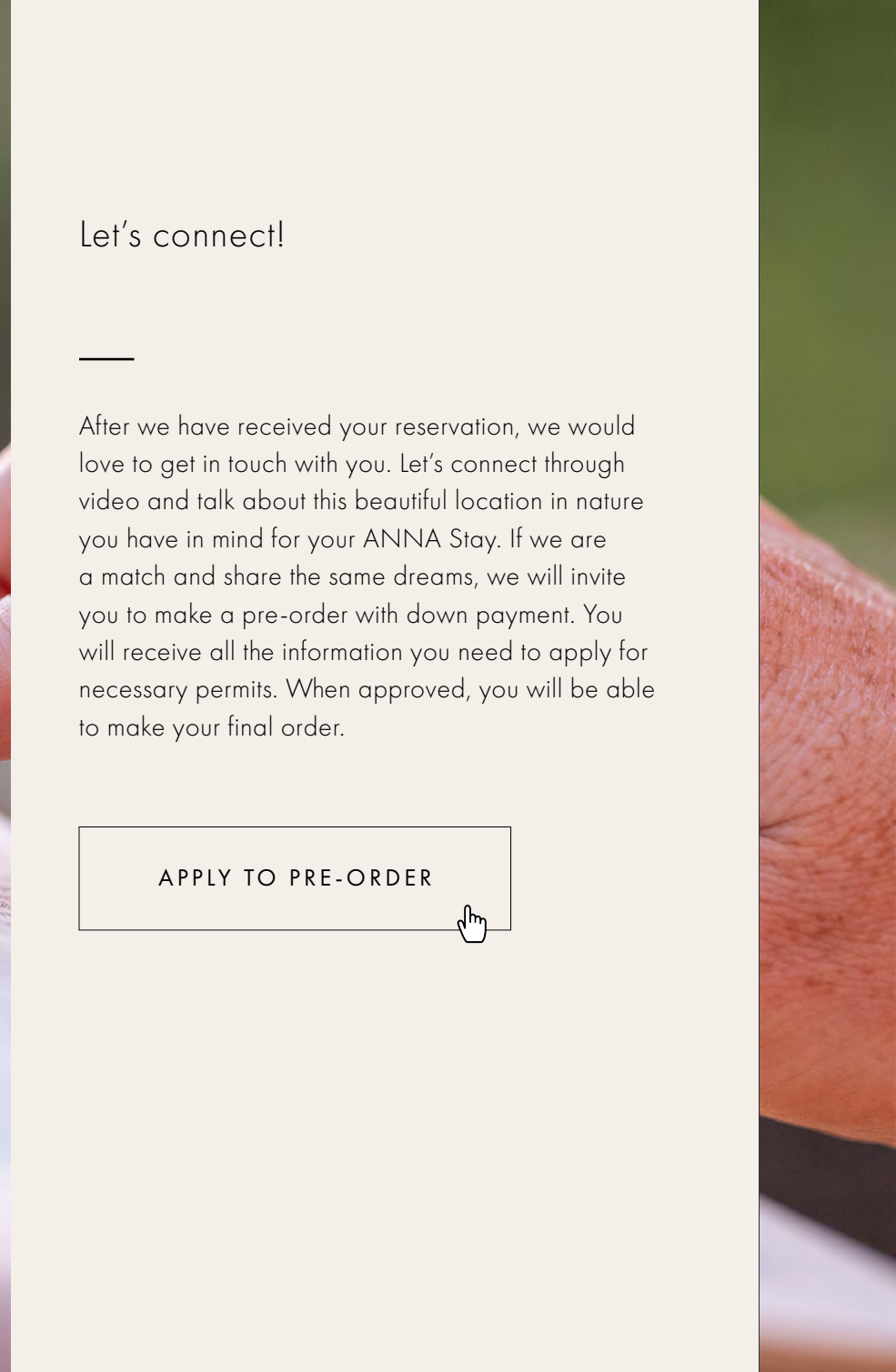


You can now place a non-binding reservation for the future purchase of ANNA Stay. Making a reservation gives you the chance to be the first to receive an invitation to place the actual pre-order with down payment.

Payments

Pre-order with down payment	30%
Shipment	60%
After installation	10%





APPLY TO PRE-ORDER



Business Case - Resort

Cabin ANNA offers great opportunities for business use. To support you in your choices, we have created a business case, based upon the first Resort concept. The first Resort is Holenberg, launched in April 2021 and located in the beautiful nature reserve De Maashorst in The Netherlands.

A total of five ANNA Stays are located at least 100-meter (300 feet) distance from each other, to create and facilitate a private experience for their guests in nature. We have used this pilot case to learn and improve Cabin ANNA over the last years. We are very happy to report that the first pilot of Resort is a great success.

Some key performance figures:

- Average occupancy rate: 91%
- Average daily rate: € 290 per night, excluding VAT
- Average length of stay: 2 to 3 nights
- Average age: 35 – 55 years
- Average occupancy: 2,5 persons per stay

Holenberg is named as one of the best eco-friendly places to stay in Europe by The Guardian.

Discover more at holenberg.com.

More information and details of the business case can be provided upon request.

Our commitment to nature

To live consciously with nature is not only a lifestyle, it's a philosophy. Our love for the outdoors brings a commitment to treating the environment with care. This philosophy affects every decision we make. From designing the efficient use of energy and space, selecting the right sustainable materials, to delivering a low maintenance cabin that can be flexibly assembled and disassembled anywhere in the world, without leaving a trace in nature.

Cabin ANNA is built with FSC certified, sustainable Accoya wood and can be delivered either in one piece or as a flatpack fitted in a container and can be installed within three days with the use of an electric crane. Each cabin is also available in a self-sufficient off-grid version, including a fire-heated boiler, a solar energy system and a wastewater treatment system. Off-grid cabins are only available in The Netherlands. The first cabins are fabricated in The Netherlands, we strive to be able to partially manufacture on each continent locally in the near future.

With ANNA, we believe we can inspire through nature. Whilst living in harmony with nature, ANNA raises awareness to preserve our environment on an individual basis. For future generations to come, we dream of a greener planet and support funding to rewild nature around the globe, together with our valued partners.





Discover more at
cabin-anna.com



Pictures Jorrit 't Hoen, Tonu Tunnel, Pie Aerts,
Sjoerd Bracké and Cuno de Bruin
Design Studio Maanzaad

Disclaimer: We attempt to ensure that the information in this brochure is complete and accurate. However, this information may contain typographical errors and other errors and inaccuracies. We assume no responsibility for such errors and omissions,

and reserve the right to: (1) revoke any offer stated in the brochure; (2) correct any errors or omissions; and (3) make changes to prices, content, product descriptions, product specifications or other information in this brochure.