

An aerial photograph of a serene landscape. In the foreground, a small wooden cabin with a dark roof and a chimney sits on a patch of ground, partially surrounded by dense green trees. The cabin has a small deck area with a white cushioned bench. Beyond the cabin, a calm lake stretches across the middle ground, reflecting the sky. A small, tree-covered island is visible in the lake. The background shows a flat, open landscape with more trees and fields under a cloudy sky.

ANNA

Cabin ANNA
catalogue



Contents

Foreword by Caspar Schols	3	2. ANNA Collection	6	3. ANNA’s unique location in nature	15	7. Business case – Resort	20
1. In mindful harmony with nature	4	Specifications	7			8. Our commitment to nature	21
		Sustainable design	8	4. Preparations	16	9. Awards, media & partners	22
		Technical details	9	5. Other information	17		
		On & off-grid	12	6. Apply to pre-order	18		
		Interior	13				
		Pricing	14				

Mother Nature

It has been an incredible journey since I built the first cabin for my mother in her back yard five years ago. It took me 10 months to complete, nearly seven months longer than I anticipated. But I could never have imagined what happened after I finished. It marked the beginning of a new, incredible adventure. A video of the cabin received a staggering 10 million views, and the ANNA project was nominated for and won several awards. My mother and I were stunned, to say the least.

All the attention around ANNA resulted in a scholarship to the Architectural Association. I studied there for three years to turn myself from a theoretical physicist into an architect. Or rather, to become a strange mixture of the two! Another effect of the media interest was that I found people who believed in ANNA and were willing to invest in the idea. Now, five years later, the ANNA team has grown to 10 people, and sometimes I still have to pinch myself to realize this is real.

As a kid, my parents would rent a small house in the south of France every year. And every year, the whole family would spend one night sleeping outdoors in the fields on thin mattresses. I'd be squashed between my mother and father on one side and my three older brothers on the other. I vividly recall the excitement of sleeping under the stars, listening to the animals as they scurried past in the night, hearing and feeling the wind on my face while tucked up in my warm sleeping bag. But the most beautiful moment was waking up with the first rays of sun on my face. It's one of my strongest childhood memories.

The idea for ANNA came from my mother's desire to feel a deeper connection with nature. She raised me and my brothers to feel at home in nature. She taught us not to question the natural world and to accept that everything makes sense, despite there being no explanation.

ANNA's moving shells establish a dynamic connection to the environment. ANNA can change with the seasons and the weather conditions. This allows us to live, sleep or work temporarily or permanently close to nature. Shuffle or push layers away to open yourself up to the environment, day and night.

ANNA represents the feeling you get when you're in the middle of a wide desert, staring out at the ocean or on the top of a mountain. You're not just an observer, you're a participant. Fully immersed. It's about the stars at night, the sunrise in the morning, the animals all around, the unknown sounds, the smells, the striking light reflecting on nature's surfaces. An opportunity to sleep outdoors in a safe and comfortable environment. ANNA reflects the intense emotion you feel when everything comes together.

It is my dream to create a network of ANNA's reaching to the most beautiful and remote corners of the world. I want to let people experience nature like never before. To raise awareness for the incredible resource our ecosystems are for our wellbeing and for our existence on this planet. And to raise support and funds for nature around the world.

Thank you to everyone who has supported us to get where we are today. I'm looking forward to continuing our journey into nature together. ANNA stands for all of you who share the same dream: a wilder planet, where we feel at home in nature.

Caspar



In mindful harmony with nature

Our greatest source of inspiration

Being in nature is not only enjoyable, but it also has a magical effect on how we live, think, act and heal. Science teaches us that natural light, sounds, views, and colours have a significant positive effect on our physical and mental health.

In an increasingly urban world, the challenge to allow nature into our daily lives is ever increasing.

By constructing buildings, we've created comfort and safety, but we've also added a distance to our natural environment and wellbeing. Walls and ceilings form both internal and external limitations.

With ANNA, inside becomes outside again. ANNA inspires you through nature. It's a magical feeling to wake up with the morning melodies of the birds around you, to feel a breeze gusting through the dining area or even to sleep under the open sky.

▶ [CLICK TO PLAY VIDEO ON YOUTUBE](#)

In balance with nature once again

ANNA fuels our dream of a green world where we live amid nature. A dream to restore the wilder world we live in and to create a deeper connection to each other and to our surroundings each day. We believe that enhancing our sensitivity towards nature will result in more love and care for our planet.

Nature has always been our primary home. We can restore the rich, biodiverse and wonderful world we live in. A chance to become a species in balance with nature once again. Let nature be the fundamental element in our lives again. Just imagine that.



ANNA Collection

We built eight prototypes which were tested by some of our early supporters. Everything we learnt from building these cabins was translated into our most recent model. We spent two years redesigning ANNA from scratch. We made the design more durable, more sustainable, more user-friendly, more beautiful, easier to (dis)assemble and suitable for a wide range of climates. In the summer of 2022, we installed our first redesigned and reengineered model in the Dutch wildlife reserve De Biesbosch: ANNA Collection.





Specifications

“ANNA Collection is the result of six years hard work. We refined every little detail. The shape of each edge, the way each element slides, the feel of each natural surface. ANNA Collection is just as I envisioned it. This is my magnum opus.”

– Caspar Schols

Fully equipped with

- In-floor bath
- In-floor storable bed (queen-size)
- Mezzanine bedroom (queen-size)
- Luxury bathroom finish
- Outdoor shower
- High-end taps & switches
- Fully equipped kitchen
- Accoya & stainless steel finishes

Further specifications

- Factory build & modular assembly on site (1-2 weeks)
- Fully integrated electricity & plumbing
- Weathertight, double glazed safety glass
- Accoya wood & stainless steel: shower, toilet & kitchen worktop

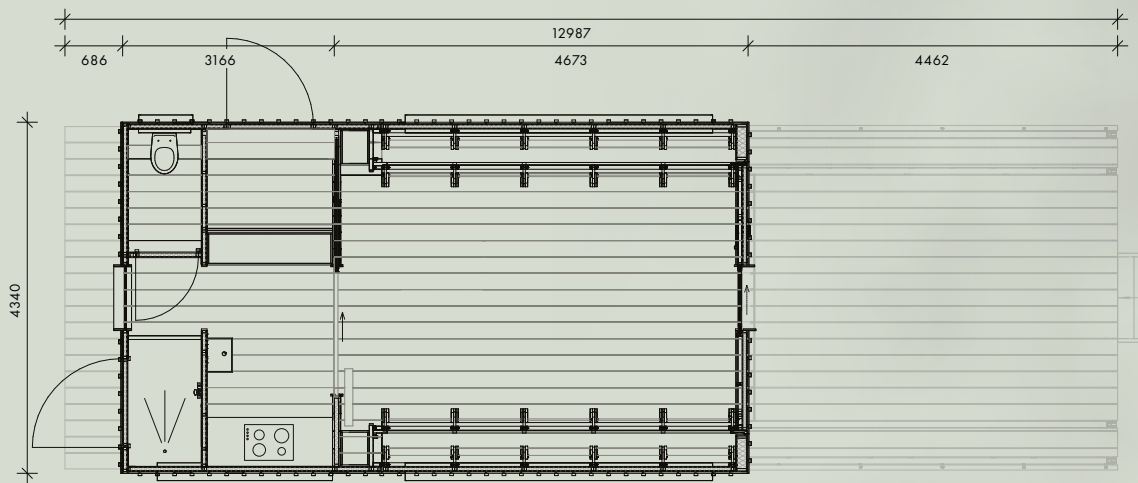
Personally built and signed by Caspar Schols

Limited production of 10 in 2023

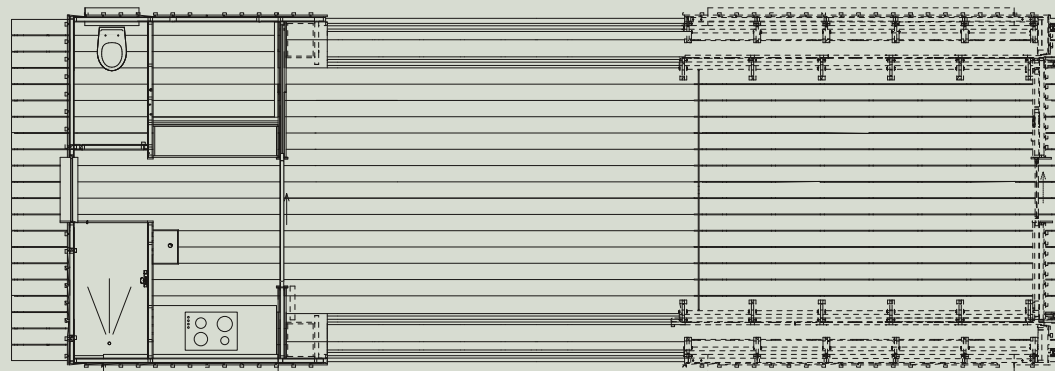
Sustainable design

Cabin ANNA is designed as a modular system with dry connections which results in a short construction time on site and minimal ecological disruption. ANNA can easily outlive you, but if necessary, all elements can be taken apart and recycled, or rebuilt in a new location. To ensure a low transportation footprint, ANNA is designed so that 80% of the unique parts can be produced locally all over the world on CNC machines in the future. ANNA can be dismantled and moved in just a few days without leaving a trace in nature.





Floor plan – Ground floor (closed)



Floor plan – Ground floor (open)

Technical details

Floor area

Approximately 30 m² or 320 ft²

Upper floor area

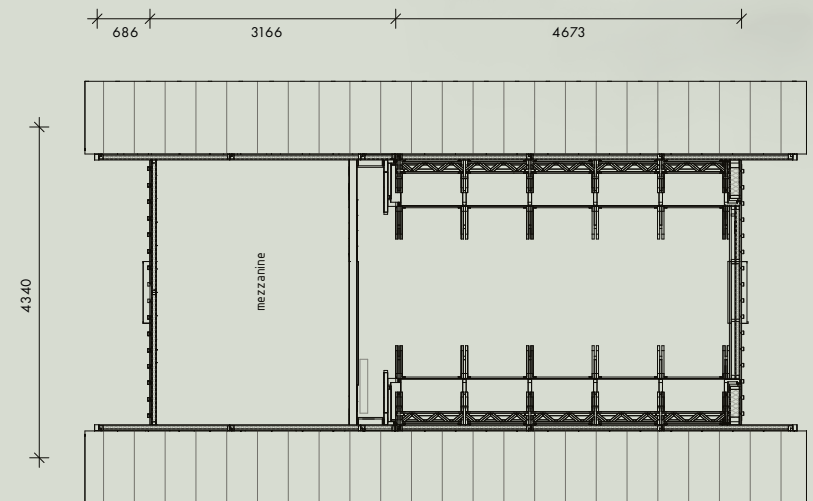
Approximately 8 m² or 86 ft²

Weight

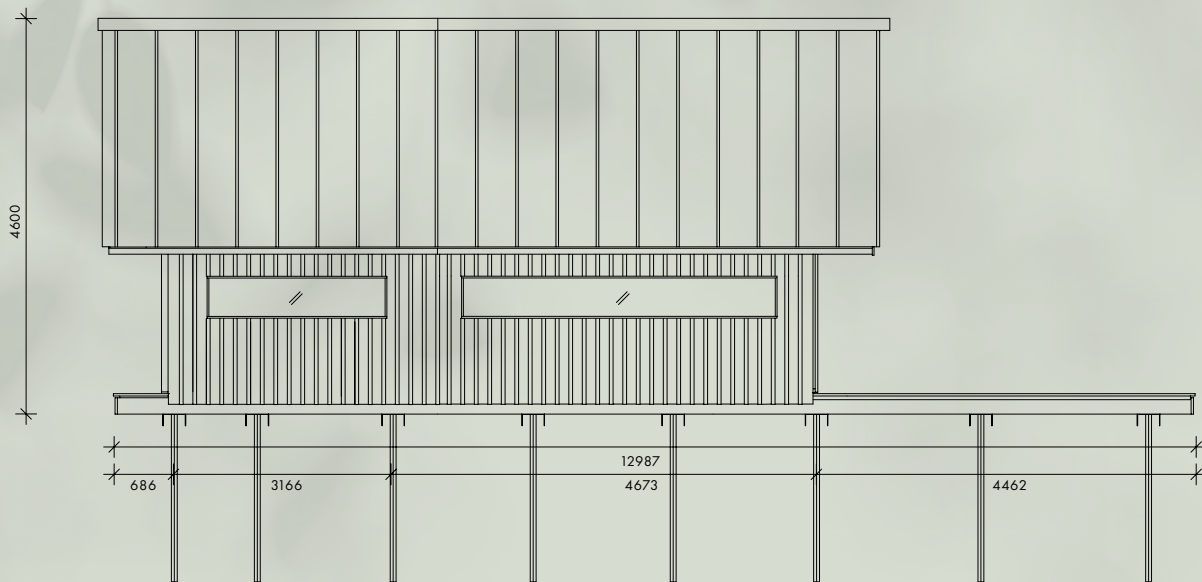
Approximately 15 tons

Height of the cabin

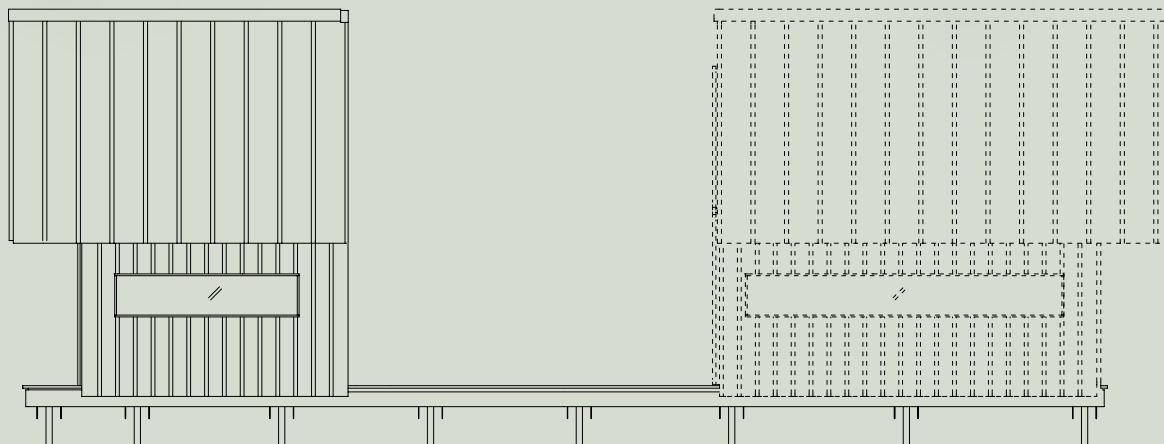
4.5 m or 14.7 ft



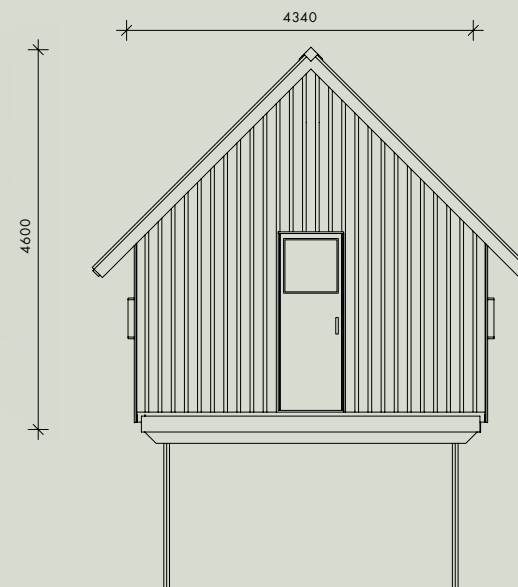
Floor plan – Mezzanine



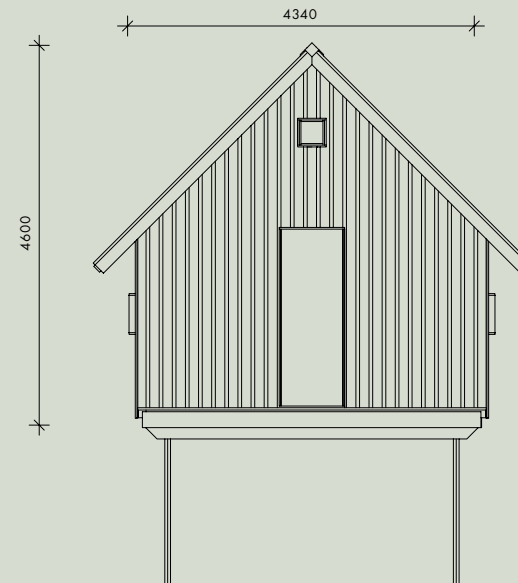
Side elevation (closed)



Side elevation (open)



Front elevation



Back elevation

Technical details

Foundation

ANNA Collection is designed to have minimal impact on nature, and therefore does not require a conventional concrete foundation. In most cases, a screw foundation is sufficient. However, local soil conditions need to be reviewed and local adjustments might be needed.

Materials

The exterior of ANNA Collection is made from high performance sustainable Accoya wood. The cabin is built with the best materials to ensure durability and strength:

- Birch plywood interior
- Steel roof
- HR+ double glazing
- Kitchen & shower made of Accoya and stainless steel

Climate

ANNA Collection is engineered to withstand heavy winds, rain and snow loads, while double glazing and patented airtight seals will keep you comfortable in colder climates. When purchasing ANNA Collection, please provide us with your local requirements and regulations so we can guide you accordingly.

Insulation

ANNA Collection is fully insulated and airtight to be comfortable at temperatures well below 0 °C. The cabin has insulated floors, airtight shells and double glazing.





On & off-grid

ANNA Collection can be installed on-grid and off-grid. When choosing the on-grid version, the client is responsible for installing necessary facilities like water, electricity and a sewage system near the cabin. We will provide a template that can be used by your local expert.

Due to varying local regulations around the world, the option for a fully turnkey off-grid solution for ANNA Collection is only available in the Netherlands. To deliver off-grid cabins outside the Netherlands, advice from a local expert is needed. As we have a good understanding of off-grid systems, we would be happy to share our knowledge with you.

Water resources

Depending on your location, there are several options for obtaining

water. For instance by drilling a well or collecting rainwater. As every location is unique, it is critical that you investigate what options work best and resolve this with your local expert. Drinking water regulations for local consumption should also be investigated.

Electricity resources

The cabin can be fitted with a solar system on the roof. Local regulations and circumstances might influence availability.

Wastewater

The off-grid system uses a septic tank located underground. If your project is located in the Netherlands, we can direct you to our local partner.

Interior

A lot of care and attention to detail has been taken to design the cabin. It is our vision to ensure a seamless experience between exterior and interior design. We have created an interior look and feel that has all necessary items and enhances the overall experience. For the Dutch market, we can provide a list of premium suppliers to help you source everything you need.





Pricing

ANNA Collection is manufactured in Europe and orders will be shipped from Europe in 2023. Please bear in mind that local taxes and import duties might apply when importing.

The price of ANNA Collection is available upon request. Please be aware that these prices do not include.

- Off-grid system
- Shipping*
- Installation
- Local taxes

*Currently, ANNA Collection is manufactured and shipped from Europe. In the future, we aim to produce locally.

ANNA's unique location in nature

ANNA blends in perfectly with the environment and becomes one with the natural world. When selecting the right location in nature for ANNA, different experience guidelines apply:

- Each cabin is surrounded by an abundance of nature
- The nights are silent and dark
- Absence of any construction or roads, within a radius of at least 100 meters
- Sufficient privacy, peace and quiet are key elements to the experience

We would be delighted to hear if you share the same passion for ANNA. If our dreams match, we are excited to partner with you and create a ANNA in nature together.



Preparations

The following preparations are required:

- Necessary permits in place *
- A (screw) foundation ** must be ready according to our specifications
- Grid connection, power drainage and water must be supplied to the site
- For an off-grid cabin, a septic tank based on our specifications must be installed together with your preferred water supply.

* Regulations differ from country to country. We advise you to contact local experts for specific advice. Please be aware that permit confirmation is critical to the delivery date.

** We will provide templates to show how to install the foundation.



Other information

Intellectual property

Cabin ANNA is protected by copyright and is a patented product.

Certifications

ANNA fully complies with all Dutch regulations. Cabin ANNA is designed with European and US certifications in mind. Local regulations should be reviewed and confirmed by the client. This is subject to order confirmation.

Manufacturing

Cabin ANNA is a Dutch company. The cabins are currently manufactured in Europe. Initially our cabins will be shipped from Europe, but in the future we aim to produce locally. To guarantee a high-end product, manufacture of the fundamental elements of each cabin will remain in the Netherlands.

Maintenance

ANNA is a well-engineered wooden structure. As with all natural products, it requires care and proper maintenance. ANNA is designed with low maintenance in mind and is built with beautiful, natural and sustainable materials. Some materials will oxidize and will become more characterful over time.

Quality

When properly taken care of, ANNA will last for generations. All critical elements will be supplied with a warranty.

Apply to pre-order

Order process



You can place a nonbinding application to purchase your ANNA. We will personally contact everyone who applies to pre-order to see if our dreams match. If our dreams match, we invite you to finalize your pre-order for the opportunity to reserve your ANNA.

Payments

Pre-order with reservation fee

Order	30%
Shipment	60%
After installation	10%





Let's connect!

After we have received your application, we would love to get in touch with you. Let's connect and talk about the beautiful location in nature you have in mind for your ANNA. If our ideas match and we share the same dreams, we will invite you to make a pre-order. You will receive all the information you need to apply for necessary permits. When approved, you will be able to make your final order.

APPLY TO PRE-ORDER





Business case - Resort

ANNA offers great opportunities for business use. To support you in your choices, we have created a business case, based on the first Resort concept. The first Resort is Holenberg, launched in April 2021 and located in the beautiful nature reserve De Maashorst in the Netherlands.

A total of five ANNA's are located at least 100 meters (300 feet) apart, to create a private experience in nature for guests. We have used this pilot case to learn and improve ANNA over the last few years. We are delighted to report that the first pilot of Resort has been a great success.

Some key performance figures:

- Average occupancy rate: 91%
- Average daily rate: € 290 per night, excluding VAT
- Average length of stay: 2 to 3 nights
- Average age: 35-55 years
- Average occupancy: 2.5 persons per stay

The Guardian newspaper named Holenberg one of the best eco-friendly places to stay in Europe.

Discover more at holenberg.com.

More information and details of the business case can be provided upon request.

Our commitment to nature

To live consciously with nature is not only a lifestyle, it's a philosophy. Our love for the outdoors brings a commitment to treating the environment with care. This philosophy affects every decision we make.

ANNA is designed sustainably. We do our best to reduce our footprint for production and transportation to a minimum. For example, all ANNA's elements are separable and easy to recycle. We designed ANNA so that most elements are easy to produce locally on standard manufacturing machines to minimize transportation. And ANNA is movable in just a few days, so the cabin can be dismantled and moved without leaving a trace in nature. There is always more we can do, and we constantly strive to improve.

It's our dream to create a network of ANNA's to contribute to a world in which people have the freedom to live passionately and consciously as part of nature. We work on this on three levels. Firstly, by letting people literally spend the night in the heart of nature, free and without barriers. Secondly, by raising social

and political awareness about how spending time in nature can benefit your wellbeing. Thirdly, by directly contributing to the development, protection, and preservation of existing and new nature. We place ANNA's in unique nature reserves and invest part of the generated revenue in the local nature reserve.

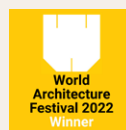




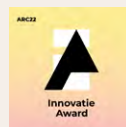
Awards, media & partners



FRAME Awards best design first
winner of 2023



Winner World Hotel Building
of the Year 2022



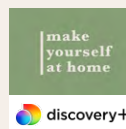
Top 3 most innovative architecture
projects of the Netherlands



A+ Awards Project of the Year 2021
(chosen from 5,000 projects worldwide)



Dezeen longlisted small building
of the year 2022



Featured in Make Yourself at Home
Discovery+

Wildlife partners

Together we place
cabins in unique
wilderness locations.





Discover more at
cabin-anna.com 

Pictures Jorrit 't Hoen, Tonu Tunnel, Pie Aerts,
Sjoerd Bracké and Cuno de Bruin
Design studio kustwacht

Disclaimer: Every attempt is made to ensure that the information in this brochure is complete and accurate. However, this information may contain typographical errors and other errors and inaccuracies. We assume no responsibility for such errors and

omissions, and reserve the right to: (1) revoke any offer stated in the brochure; (2) correct any errors or omissions; and (3) make changes to prices, content, product descriptions, product specifications or other information in this brochure.